

Abbi Top - (girls)

Sizes: 6mth-10

\$38

Short sleeve peasant style top. Ruffles at neck, sleeves and has a 1 1/2" hem ruffle.

1/4" elastic used for neck and sleeves

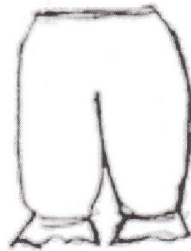


Addie Pants - (unisex)

Sizes: 6mth-5

\$30

Unlined full length pants with elastic 2" above leg hems for ruffling. Elastic at waist.



Amy Gown - (girls)

Sizes: 12mth-10

\$49

Short Sleeve shorter version of Libby gown with larger hem ruffle. Length hits just right below the knees. Ribbon sash at chest or above hem ruffle.

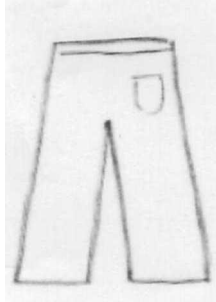


Asher Pants - (boys)

Sizes: 6mth-10

\$54

Fully lined/reversible pants. Slightly longer for cuff. 1 pocket on back of each side. Elastic waist.



Ava Top - (girls)

Sizes: 6mth-10

\$40

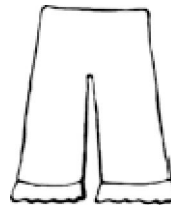
Long Sleeve peasant style top, ribbon sash at yoke, ruffle at hem



Avery Gaucho Pants - (girls) Sizes: 6mth-10

\$35

Unlined cropped pants with double ruffle hem. Bottom ruffle is 5"-top ruffle is 3". Elastic waist.

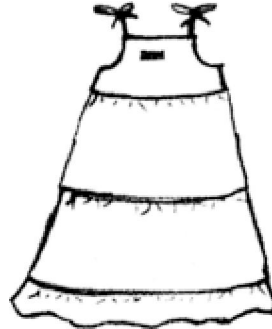


Bella Gown - (girls)

Sizes: 12mth-10

\$68

Sleeveless ankle length dress with lined yoke. Ribbon or fabric ties at shoulders. 3 tiered unlined peasant style skirt with optional ribbon or ric rac trim between tiers.



Bobby Suit - (boys)

Sizes: 6mth-4

\$62

Short cuffed sleeve one piece romper, covered buttons for back closure, small self collar



Boy's Short Sleeve Tee - White short sleeve tee. Available with embroidery or appliqué design. Available in sizes 6 months, 12 months, 18 months, 2T, 4T, 6, 8, 10, & 12.

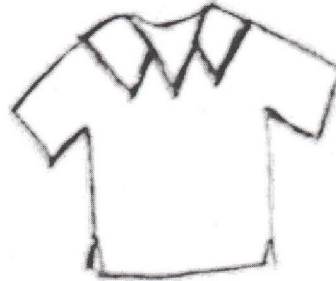
\$22

Boy's Tunic Top - (boys)

Sizes: 6mth-10

\$40

Unlined v-neck top with pointed collar and short sleeves, 1 1/2" side vents



Breanna Bloomers - (girls)

Sizes: 6mth-10

\$28

Unlined longer style bloomers with elastic 1 1/2" above leg hems for ruffling. Elastic at waist.



Callie Pants - (girls)

Sizes: 6mth-10

\$42

Unlined full length pants with double ruffle hems. (bottom ruffle 7" and top ruffle 6") Elastic at waist.



Cami Top - (girls)

Sizes: 6mth-10

\$45

Sleeveless baby doll style top. Straps tie at top of shoulders. Fully lined yoke with unlined skirt. Optional ribbon sash at bottom of yoke.



Carson Top - (boys)

Sizes: 6mth-10

\$40

Unlined short sleeve top with pointed collar, 2 pockets on front, and buttons down the front. 1 1/2" vents on sides.



Cora Dress - (girls)

Sizes: 6mth-10

\$59

Sleeveless drop waist style dress. Hem falls just below knee. Upper bodice fully lined with covered button shoulder closure. Optional sash right above hem ruffle.



Emery Skirt - (girls)

Sizes: 2-10

\$46

Long unlined skirt with ruffle at hem, Optional ribbon/sash above ruffle. Elastic at waist.



Emma Dress - (girls)

Sizes: 6mth-10

\$54

Shin length unlined peasant dress with 3/4 length sleeves. Elastic at chest and upper arms. 2" ruffle on hem. Optional chest sash.



Girl's Short Sleeve Tee - White short sleeve tee with lettuce edge sleeves and hem. Available with embroidery, appliqué, or ribbon trim. Available in sizes 6 months, 12 months, 18 months, 2T, 4T, 6, 8, 10, & 12. \$22

Gabby Top - (girls)

Sizes: 6mth-10

\$42

Peasant Style Top with 3/4 length sleeves, cinched fabric tie waist



Harriett Coat - (girls)

Sizes: 2-10

\$88

Fully Lined, full length sleeve, gathered at round yoke with round piped collar, covered buttons



Harrison Jacket - (boys)

Sizes: 2-8

\$68

Single breasted, unlined, 2 front patch pockets, contrast elbow patches, faux leather buttons.

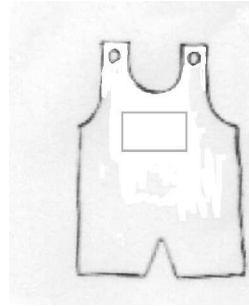


Jon Jon - (boys)

Sizes: 6mth-4

\$56

Fully lined sleeveless shortall. Buttons on shoulders. Snaps at crotch.

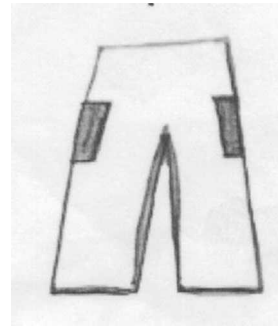


Knox Pants - (unisex)

Sizes: 6mth-10

\$44

Unlined full length pants with side pocket on each leg. Elastic at waist.



Laci Dress - (girls)

Sizes: 6mth-10

\$59

Fully lined a line style jumper. Hem falls right above or at knee. Covered button shoulder closures. Optional 1 1/2" hem ruffle. Optional ribbon trim at chest, 2-3" above hem, or bows over buttons.



Laci Top - (girls)

Sizes: 6mth-10

\$42

Fully lined a line style top. Hem falls at hips. Covered button shoulder closures. Optional 1 1/2" hem ruffle. . Optional ribbon trim at chest, 2-3"

above hem, or bows over buttons.

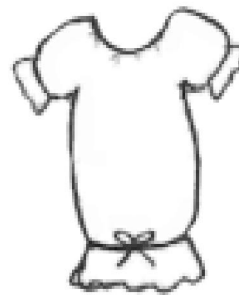


Libby Day gown - (girls)

Sizes: 6mth

\$40

Libby gown but with ribbon casing at hem for closure.



Libby Gown - (girls)

Sizes: 6mth-10

\$48

Ankle length short sleeve peasant style gown. Elastic in neck and sleeves. 3-4" hem ruffle.



Libby Wrap - (girls)

Sizes: 6mth-10

\$52

Fully lined with open back. 1/2" wide shoulder straps and back tie. 3 - 4" ruffle on hem.



Liza Wrap Dress - (girls)

Sizes: 6mth-10

\$64

Sleeveless knee length , A line style wrap dress that ties on the inside and outside. 2" hem ruffle. Fully lined.



Lulu Gown - (girls)

Sizes: 6mth-10

\$54

Ankle length long sleeve peasant style gown. Elastic in neck and wrist. 3-4" hem ruffle.



Maddi Skirt - (girls)

Sizes: 2-10

\$40

Short unlined skirt with 2 ruffles and optional ribbon/sash sewn above top ruffle. Elastic waist.

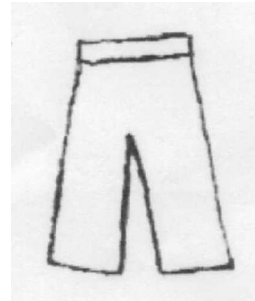


Maddox Pants - (unisex)

Sizes: 6mth-10

\$35

Unlined full length pants. Elastic at waist.

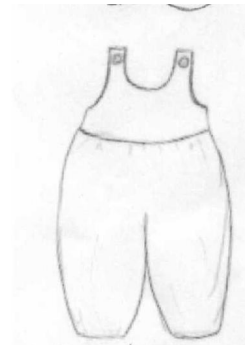


Mason Romper - (boys)

Sizes: 6mth-4

\$58

Sleeveless ankle length boys romper. Elastic casing at ankle. Fully lined yoke. Covered button closure on shoulders.

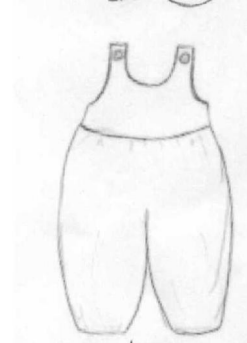


Miley Romper - (girls)

Sizes: 6mth-4

\$58

Sleeveless ankle length girls romper. 1/4" elastic 1 1/4" from ankle hem. Fully lined yoke. Covered button closure on shoulders. Optional ribbon trim below yoke.



Paige Skort - (girls)

Sizes: 2-10

\$44

Mid thigh length skort with 1" side vents and 1" hem ruffle. Elastic in back waist, and flat panel at front waist.



Penelope Dress - (girls)

Sizes: 6mth-10

\$59

Sleeveless baby doll style dress. straight hem. Lined yoke. The hem falls right below the knee. Optional ribbon sash above hem ruffle.



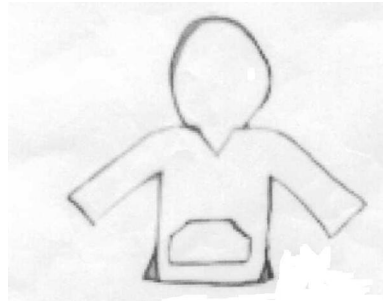
Penelope Dress with Ruffle - (girls) Sizes: 6mth-10 \$59

Sleeveless baby doll style dress. ruffled hem. Lined yoke. The hem falls right below the knee. Optional ribbon sash above hem ruffle.



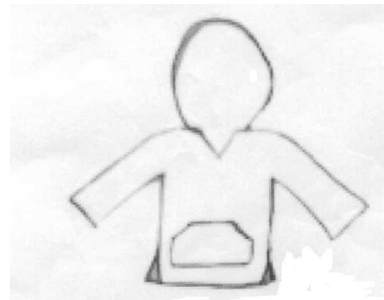
Peyton Pullover - (Unisex) Sizes: 6mth-10 \$48

unlined pullover with hood, drawstring at neck, and large front pocket.



Peyton Lined Pullover - (Unisex) Sizes: 6mth-10 \$58

lined pullover with hood, drawstring at neck, and large front pocket.

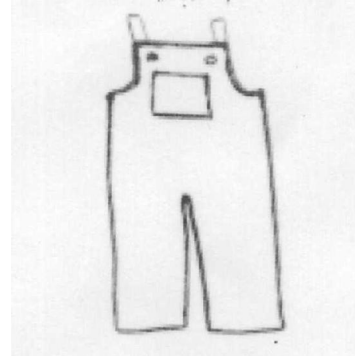


Pressley Overalls - (girls)

Sizes: 6mth-10

\$62

Fully or partially lined overalls with front pocket. Covered button closure on front. 2-3" hem ruffles. Snap tape used for smaller sizes. Optional chest sash.

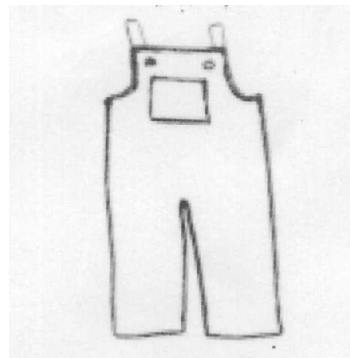


Price Overalls - (boys)

Sizes: 6mth-10

\$62

Fully or partially lined overalls with front pocket. Covered button closure on front. Snap tape used for smaller sizes.

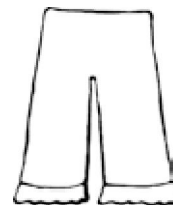


Riley Pants - (girls)

Sizes: 6mth-10

\$35

Full length ruffle pants



Robbins Dress - (girls)

Sizes: 6mth-10

\$70

Ankle length dress with ribbon straps (1 1/2" or 2 1/4") that thread through 2 button holes for back closure. Lined yoke.

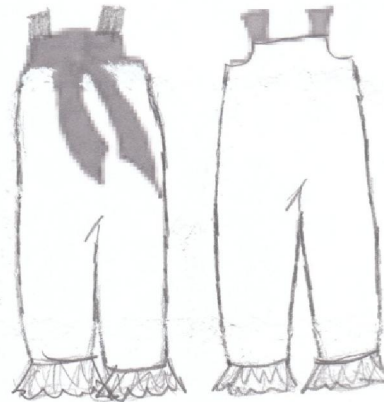


Robbins Overalls - (girls)

Sizes: 6mth-10

\$62

Ankle length, fully lined, 2 1/2" ruffle at leg, ribbon straps (1 1/2" or 2 1/4") that thread through 2 button holes for back closure.



Robbins Top - (girls)

Sizes: 6mth-10

\$48

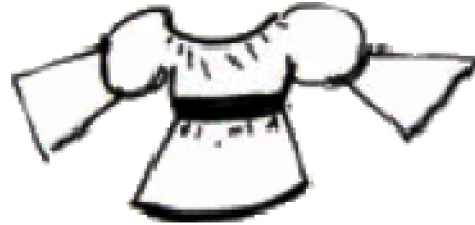
Hip length dress with ribbon straps (1 1/2" or 2 1/4") that thread through 2 button holes for back closure. Lined yoke. (see Robbins dress picture)

Sadie Top - (girls)

Sizes: 6mth-10

\$40

3/4 length sleeve unlined peasant style top. Ruffles at neck. 1/4" elastic at upper arms and chest. Optional sash at chest.

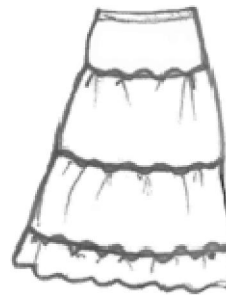


Saige Skirt - (girls)

Sizes: 2-10

\$46

3 tiered unlined peasant style skirt with optional ribbon or ric rac trim between tiers. Elastic at waist.

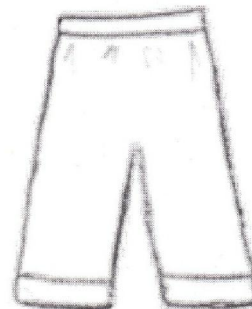


Scottie Pants - (boys)

Sizes: 6mth-10

\$44

Partially lined full length pants. Longer for rolling the cuffs. Lower legs are lined for rolling. One pocket on back of pants. Elastic at waist.



Sully Pants - (unisex)

Sizes: 6mth-10

\$38

Unlined full length pants with casing at the hem with ribbon or fabric tie

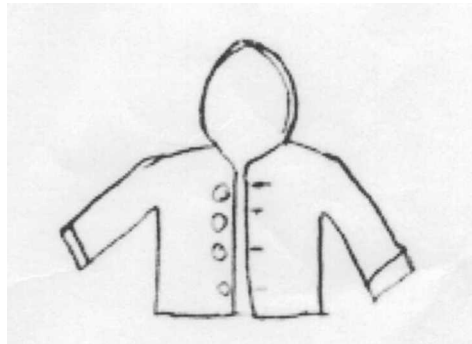


Taylor Jacket - (Boys)

Sizes: 6mth-10

\$58

Fully lined hooded jacket with 4-5 covered buttons up front. 2 pockets on lower front of jacket.



Tracy Jacket - (girls)

Sizes: 6mth-10

\$58

Fully lined hooded jacket with 4-5 covered buttons up front. 2 pockets on lower front of jacket, contrast ruffle at hem.

